

789 BROADWAY

NORTHEAST CORNER OF FAYETTE STREET – BUSHWICK



SIZE

Grade: 7,500 SF | 16.5' ceiling heights
2nd Floor: 7,500 SF | 14.5' ceiling heights
Lower Level (Selling): 7,500 SF | 11.0' ceiling heights
Total: 22,500 SF

ABOUT

- One block from Woodhull Medical Center – 465,000 outpatient visits in 2015
- 50' of frontage on Broadway; 125' on Fayette Street
- 1 block from the J & M train station – 2.9M annual ridership
- Within 2 blocks of 5 bus line stops – 31.6M annual ridership

DEMOGRAPHICS

	<u>0.5 mi</u>	<u>1.0 mi</u>	<u>2.0 mi</u>
Population	45,427	192,492	605,461
# of Households	15,779	65,305	224,752
Average HH Income	\$45,745	\$51,617	\$61,261

NEIGHBORING TENANTS

Walgreens, Burger King, Modell's, Foot Locker, Rainbow, Planet Fitness, Crunch Fitness, McDonald's, iHop, BKLYN Commons

CONTACT

Isaac Mograby
imograby@crtl.com
212.292.0214

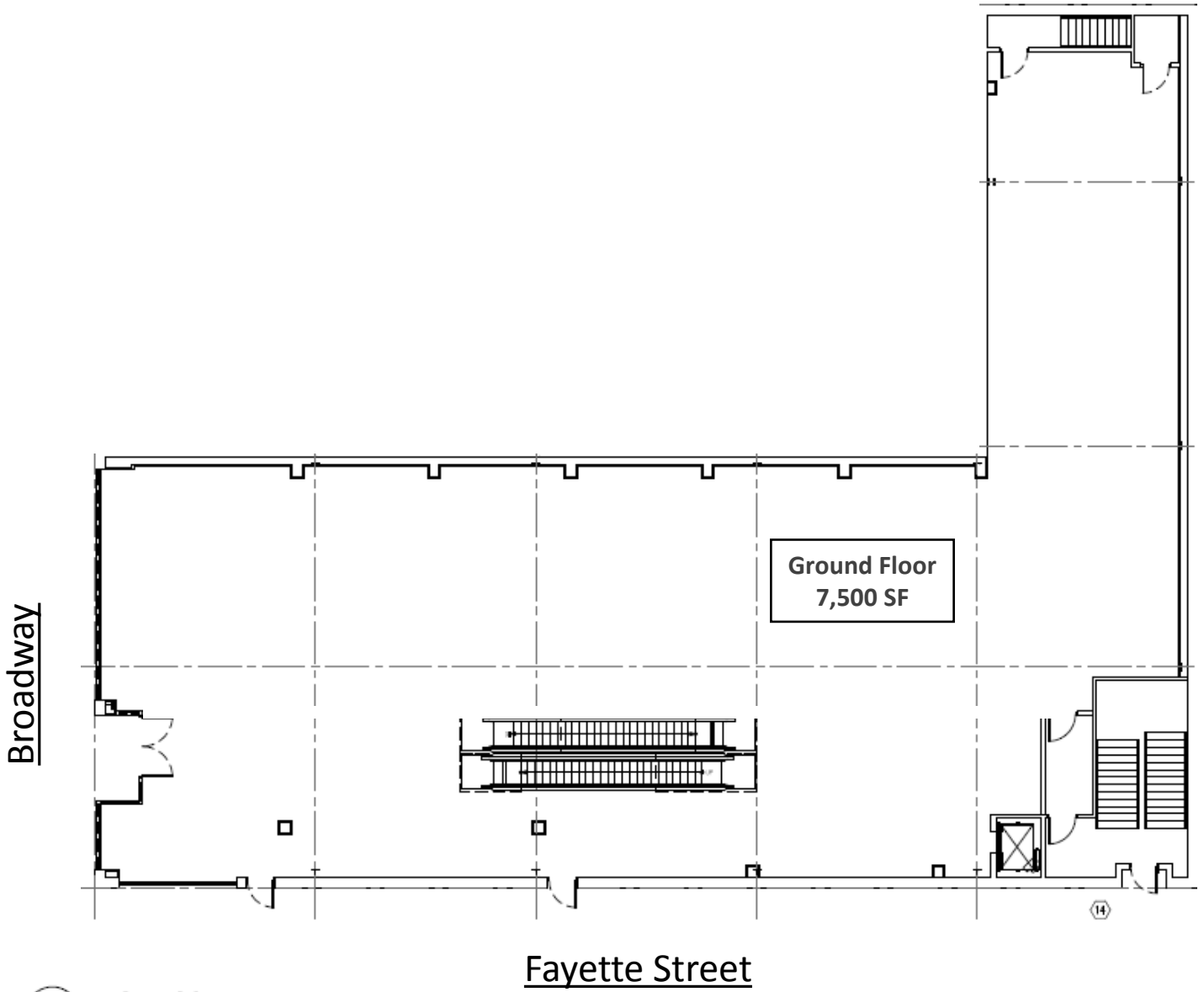
Jack Chera
jchera@crtl.com
212.292.0211

Morris Dabbah
mdabbah@crtl.com
212.292.0223

789 BROADWAY

NORTHEAST CORNER OF FAYETTE STREET – BUSHWICK

Ground Floor Plans

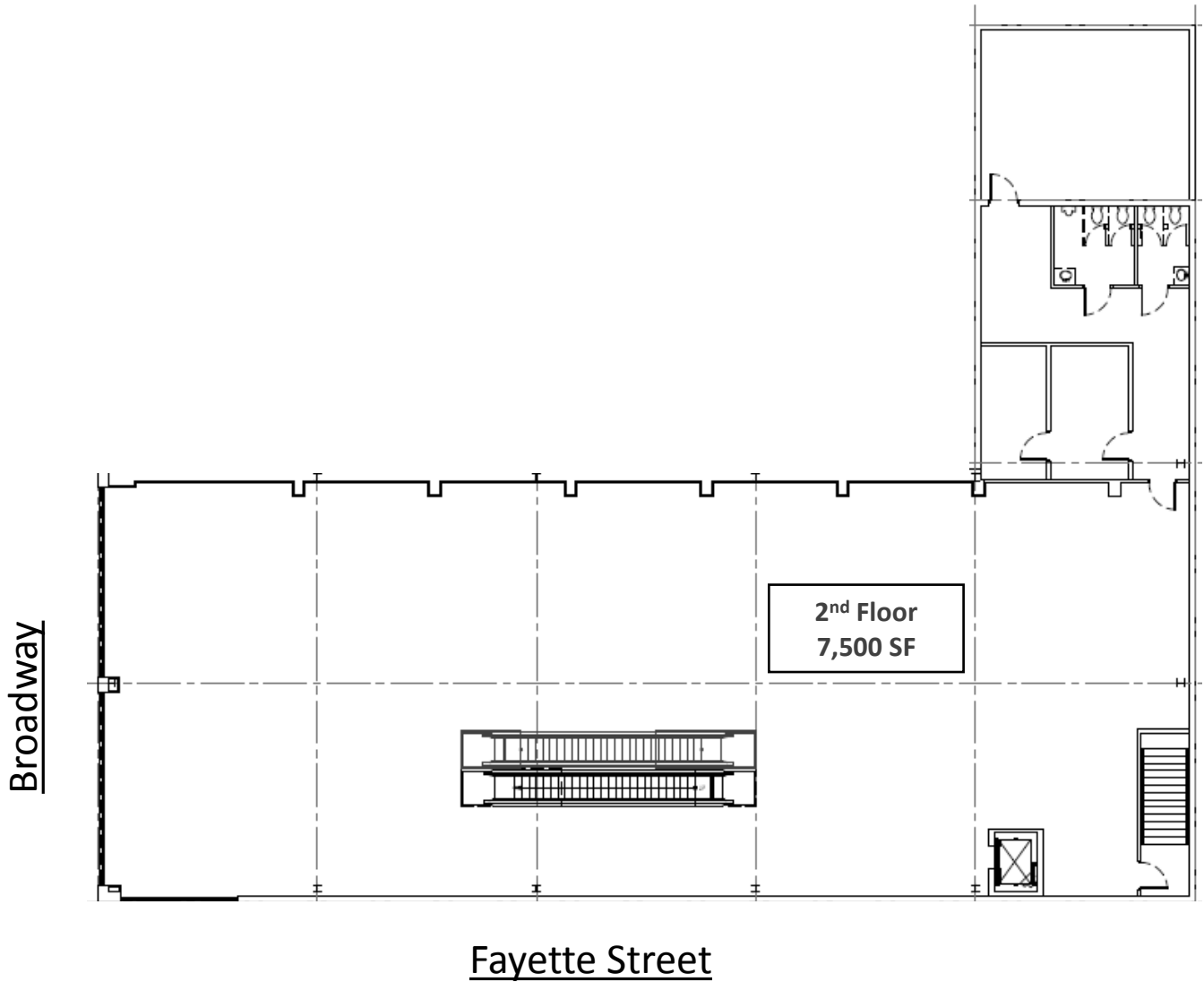


2 FIRST FLOOR PLAN
3/32" = 1'0"

789 BROADWAY

NORTHEAST CORNER OF FAYETTE STREET – BUSHWICK

2nd Floor Plans

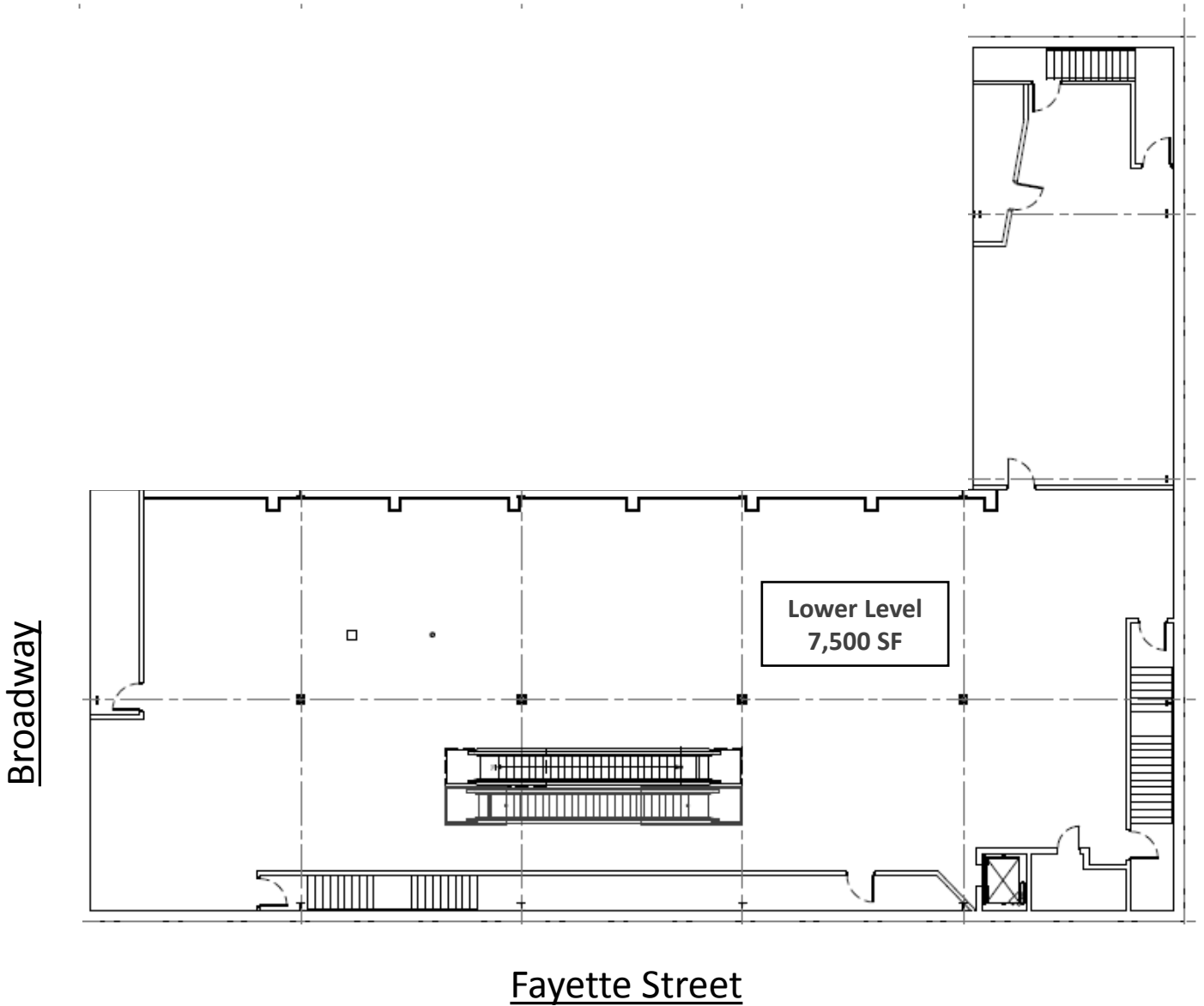


3 SECOND FLOOR PLAN
3/32" = 1'-0"

789 BROADWAY

NORTHEAST CORNER OF FAYETTE STREET – BUSHWICK

Lower Level Floor Plans



1 BASEMENT PLAN
3/32" = 1'-0"

789 BROADWAY

NORTHEAST CORNER OF FAYETTE STREET - BUSHWICK

Retail Map



FLUSHING AVENUE

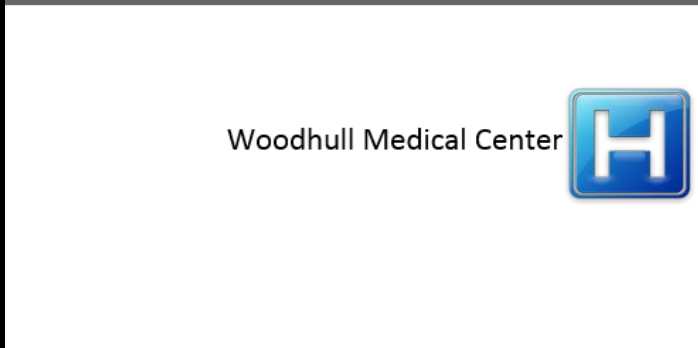
B
R
O
A
D
W
A
Y



AVENUE OF PUERTO RICO



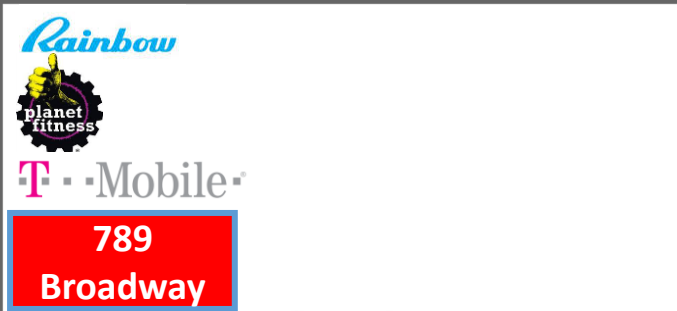
FLUSHING AVENUE



MARCUS GARVEY BOULEVARD



MARCUS GARVEY BOULEVARD



FAYETTE STREET

